

ILMS

Her

The Flu

Babel

Good Will Hunting



RECOMMEN



USIC

Talk

BOOKS

Night Work

*How to Win Friends
& Influence People*

*Crucial Conversation:
Tools for Talking When Stakes Are High*



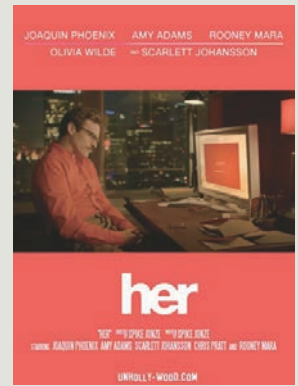
DATIONS



Death Stranding

GAM

FILMS



Her

Country: The United States

Year: 2013

Recommended by Maxwell YANG

Her is a movie directed by Spike Jonze, and explores an intimate relationship from the unique perspective of artificial intelligence. The film depicts a story of a lonely writer who develops an unlikely relationship with an operating system designed to meet his every need in a near future. The special relationship between the writer and his fictitious partner reveals an innovative way to communicate and connect with others through new technology, which makes us

reflect on our own way of socializing and interacting with the world. It is a good avenue for us, especially for people who are not good at forming close relationships with others in real life, to rethink the definition of interpersonal communication and connectivity.

The Flu

Country: Korea

Year: 2013

Recommended by Izzy ZHAO

A group of Southeast Asian smugglers came to South Korea through difficulties and dangers, but almost all the smugglers in the whole container died, only one person dragged his weak body to freedom in downtown Seoul. It's not surprising that this person carries the deadly swine flu virus. In just one day, the virus quickly spreads all over the city. Many people are unconsciously infected, which leads the shadow of death to haunt the city. Before long, the swine



flu virus breaks out and spreads widely, and the once peaceful country faces an unprecedented disaster. We know that, biologically, pathogens spread from one organism to another. Yet, it is the interactions and communications between human beings in such a disaster that reflect the complexity and connectivity of human nature.

Good Will Hunting
Country: The United States

Year: 1997

Recommended by Kelsey ZHU

The film tells the story of a cleaner at MIT called Will Hunting. Will has talent for mathematics, but comes from a depressed economic and social background. With the help of Professors Lambert, Professor Thorn and his friend Chuck, Will finally opens his mind, removes interpersonal barriers, and recovers a sense of self and love for another.

IQ is as important as EQ. The protagonist ignores his integration with the society and socializing with others, even if he is a genius, he is also feels inferior and unhappy. Fortunately, he makes some good friends and gets help from them, so that he can be a better person.



Babel

Country: The United States

Year: 2006

Recommended by Bosco YE

Babel is a movie directed by Alejandro González Iñárritu, which aims to show the tragedies of people in several different countries, which occur due to poor communication. The film shows how, in the short period of 11 days, manifold unfortunate things in the world happened in four families from different countries, and each the misfortune is caused by poor communication. The director shows us the importance of communication through the circumstances of families in four different countries. For us, especially those who are not good at communication, this film underscores the importance of communication.